



UltraTress

SIMPLE SAFE FAST

Nothing makes a woman feel more beautiful than her hair. Whether it's length, volume or luster, hair brings out the confidence all women want.

UltraTress® hair extensions can be found in the top salons worldwide. The best hair stylists turn to UltraTress to deliver top quality, natural looking hair extensions in less than two hours! UltraTress hair extensions are hand-selected, 100% Remy human hair available in multiple application methods and in a variety of colors for infinite possibilities. Our extensions come in different hair lengths in both silky straight and natural body.

**Visit: www.UltraTress.com
for more information.**



NEW

ULTRASEAMLESS²

100% Premium Remy Human Hair

The next generation of hair extensions to our UltraTress line is here. UltraSeamless² extensions have double-drawn hair density for fuller volume from root to tip. The ultra-thin tape-in extension create a discreet, virtually undetectable look when applied. UltraSeamless² are easy for your clients to maintain at home with our home care liquid products found on page 7.

- 100% premium Remy human hair
- Seamless, undetectable tape-in application
- Adds volume and length to thinning and fine hair
- Gorgeous colors available to blend with your client's existing hair or add highlights and lowlights
- Easy home maintenance

AVAILABLE IN: [SEE PAGE 6 FOR COLORS]

14" NATURAL BODY (FOUR WEFTS, 15" WIDE):

| | | | | | |
|-----|--------|------|------|-------|-------|
| 10G | 3N | 9V | C4/8 | C6/9 | C7N/9 |
| 2NA | 60PLAT | C3/5 | C5/7 | C7/10 | C7G/9 |

20" SILKY STRAIGHT (FOUR WEFTS, 15" WIDE):

| | | | | |
|-----|--------|------|-------|-------|
| 10G | 3N | C3/5 | C6/9 | C7C/9 |
| 2NA | 60PLAT | C5/7 | C7/10 | |



ULTRA II PLUS

100% Premium Remy Human Hair

Ultra II plus hair extensions have double-drawn hair density for fuller volume from root to tip in each extension using a pre-bonded medical grade adhesive. Whether your client needs extra length, more volume or just wants to spice up her look with highlights or lowlights, Ultra II plus hair extensions are the perfect solution. Undetectable, natural looking straight hair designed for fast, easy positioning and can be reused with proper UltraTress hair care products found on page 7.

AVAILABLE IN: [SEE PAGE 6 FOR COLORS]

14" / 18" (FOUR STRIPS, 1½" WIDE):

| | | | |
|------|-----|------|-----|
| 1-JB | 4N | 6NG | 9V |
| 2NA | 3RV | 6A | 9N |
| 3N | 5G | 7BRZ | 10G |

14" / 18" (TWENTY STRIPS, 1½" WIDE):

| | | | |
|------|------|------|-------|
| 1 | 4RG | 8YG | C5/7 |
| 1-JB | 5RG | 9V | C6/9 |
| 2NA | 5G | 9N | C7B/9 |
| 3N | 6NG | 10G | C7G/9 |
| 4N | 6A | C2/3 | C7N/9 |
| 4G | 7BRZ | C3/5 | C7/10 |
| 3RV | 7G | C4/5 | C8/7 |
| 4RV | 7V | C4/8 | |





ULTRALINKS

100% Premium Remy Human Hair

UltraLinks uses a cold-fusion attachment method with no adhesives or heat and will not damage your client's hair. It adds volume, texture, length and color. UltraLinks are great for fill-ins and achieving highlights or lowlights for the budget conscious.

Just a simple 1, 2, 3 method – lift the hair, loop, crimp and you're done. With proper application and maintenance, UltraLinks can stay in for up to 6-8 weeks when using our liquid hair care products on page 7.

UltraLinks are quick to apply, easy to remove and can be reused.

AVAILABLE IN: [SEE PAGE 6 FOR COLORS]

14" / 18" SILKY STRAIGHT & 18" BODY WAVE

| | | | | |
|-----|-----|------|------|-------|
| 1 | 4RV | 7BRZ | 10G | C6/9 |
| 2NA | 4RG | 7G | C2/3 | C7B/9 |
| 3N | 5RG | 7V | C3/5 | C7G/9 |
| 4N | 5G | 8YG | C4/5 | C7N/9 |
| 4G | 6NG | 9V | C4/8 | C7/10 |
| 3RV | 6A | 9N | C5/7 | C8/7 |





NEW

ULTRATOP WOMEN'S TOPPER

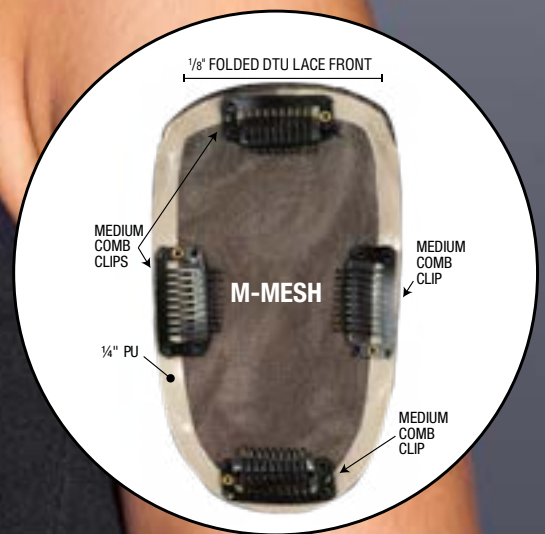
100% Handmade Remy Human Hair

When your clients ask for the ultimate in toppers to conceal their thinning hair in the crown area, think "UltraTop" from UltraTress®. Our **NEW** UltraTop women's topper is made with 14" luxurious Remy human hair and is hand-knotted on to a comfortable M-mesh base. To help with its easy application, the UltraTop also has four comb clips.

- 100% Remy human hair, 14" long
- Medium density
- M-mesh with ¼" poly perimeter and ⅛" folded DTU lace front
- 5" x 2¾" oval
- Four medium comb clips

AVAILABLE IN: [SEE PAGE 6 FOR COLORS]

| | | | | |
|-----|-----|----|-----|----|
| 1 | 2NA | 4G | 6NG | 9N |
| 10G | 3N | 4N | 7G | |



VICTORIA WOMEN'S TOPPER

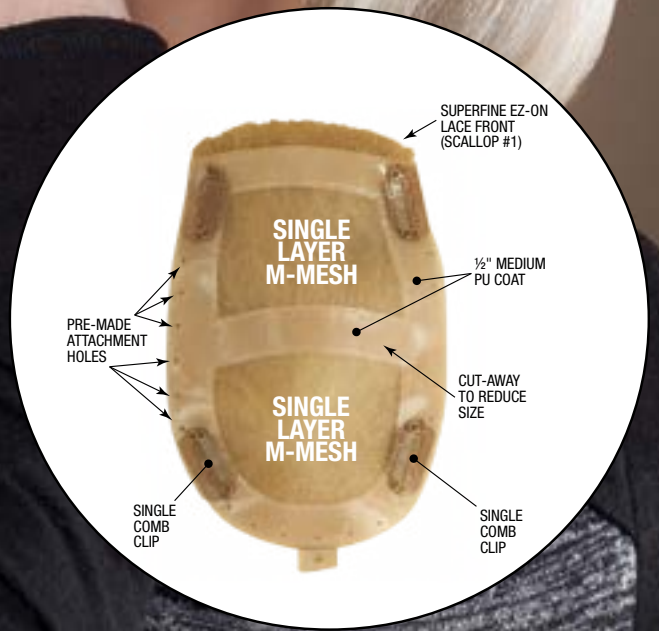
100% Handmade Remy Human Hair

Victoria is two women's toppers in one. The ½" poly coating allows Victoria to provide full coverage or can be reduced for smaller areas.

- 14" 100% Remy human hair
- Medium density
- Superfine EZ-ON lace front with single layer M-mesh, ½" poly perimeter and center allowing for customization
- 3½" x 5¾" oval
- Four medium comb clips

AVAILABLE IN: [SEE PAGE 6 FOR COLORS]

| | | | | | |
|-----|-----|------|-----|-------|-------|
| 10G | 4N | 6A | 7V | 9V | C7G/9 |
| 2NA | 5G | 6NG | 8YG | C5/7 | C7N/9 |
| 3RV | 5RG | 7BRZ | 9N | C7/10 | |



ULTRATRESS COLORS RING #86



1



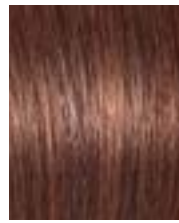
1JB



2NA



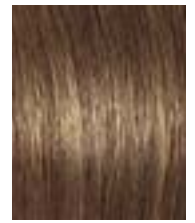
3N



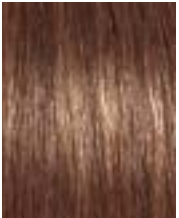
3RV



4N



4G



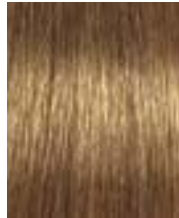
4RG



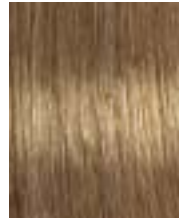
4RV



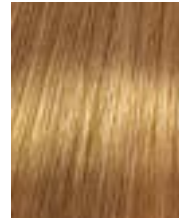
5RG



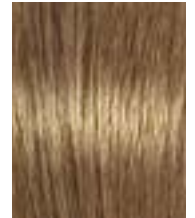
5G



6A



7BRZ



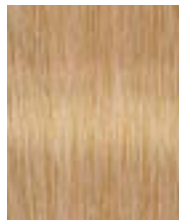
6NG



7V



7G



8YG



9V



**DUAL
COLORS**



9N



10G



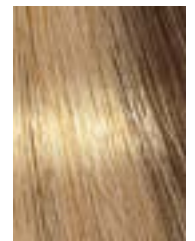
C2/3



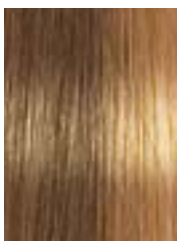
C4/5



C3/5



C4/8



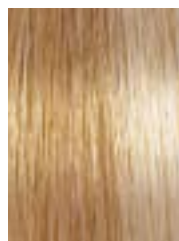
C5/7



C6/9



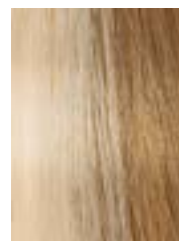
C7/10



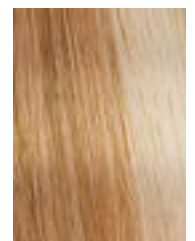
C7B/9



C7G/9



C7N/9



C8/7

HAIR CARE

UltraTress's hair care line is exclusively formulated to prolong the shine and luster of human hair extensions. Designed as a four-step system, these products can also be used on all hair types including chemically treated hair.

BALANCING SHAMPOO

A gentle shampoo that cleanses away organic oils and adds moisture and body to your UltraTress Hair Extensions, improving elasticity and strength, leaving hair more manageable. Specially formulated to keep UltraTress human hair extensions in for a longer period of time.

CONDITIONER

[DO NOT USE ON HAIR BEFORE APPLICATION.]

Promotes body and shine, smoothes hair, reduces static and prevents dryness along with getting flyaway strands back in shape. Can also be used daily as a detangler that's safe to the adhesive bond.

LEAVE-IN CONDITIONER SPRAY

Nourishes and protects UltraTress Hair Extensions from the wear and tear of daily styling. It leaves hair smooth without build up and gives hair a healthier look from root to end. Contains sunscreen that helps protect against color loss, and damage from harmful UV rays.

FINISHING MIST SPRAY

Provides a clean, flexible, all day hold that secures the hair strands with a natural touchable finish. Easy to brush through formula reactivates with water for easy restyling. Creates a barrier between hair and damaging UV rays.



ACCESSORIES

NOT SCALED TO ACTUAL SIZE



Euro Novelle
8 oz. shown
12/case
Code: 860
Also available in
32 oz. and gallons



UltraTress Color Ring
Code: 86

**UltraTress
Liquid Release**
Code: M2076

UltraTress Liquid Adhesive
Code: M2075



FlexBrush
Code: M1155



UltraTress Loop Brush
Code: M1169



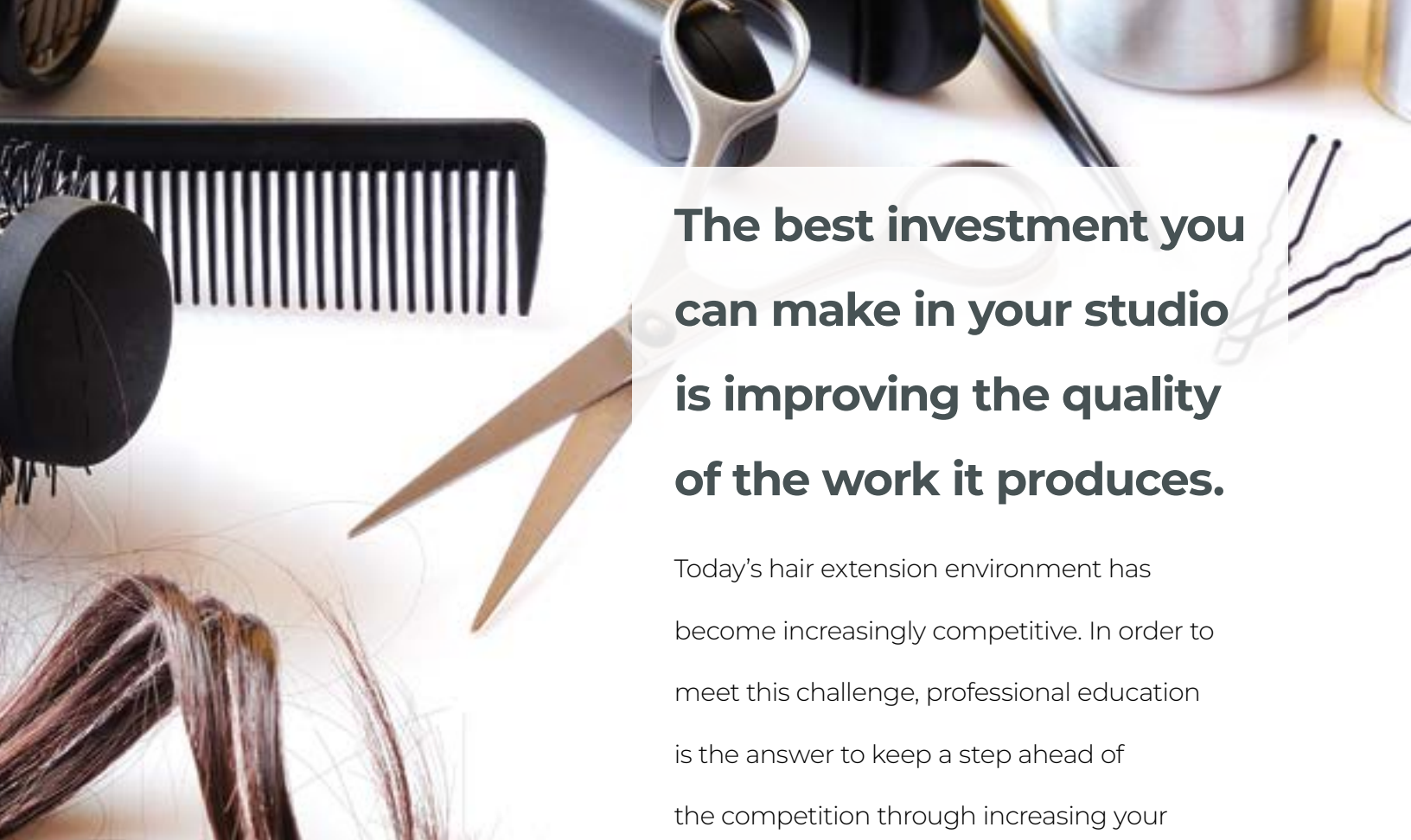
Curved Tip Pliers
Code: M605



UltraLinks Tool
Code: M615



UltPressing Tool
Code: M2082B



The best investment you can make in your studio is improving the quality of the work it produces.

Today's hair extension environment has become increasingly competitive. In order to meet this challenge, professional education is the answer to keep a step ahead of the competition through increasing your stylists' skill level. For more than 25 years, the Hair Academy has excelled in training hair stylists worldwide. Professional education at the Hair Academy, regional academy or online will elevate your stylists to a new level to meet today's challenges.



FOR MORE: HAIRVI.CO/HA



UltraTress

Ultimate hair extensions.



UltraTress.com



info@UltraTress.com



UltraTressExtension



UltraTressExt



800-327-5555

UltraTress® is a brand of
Hair Visions International®